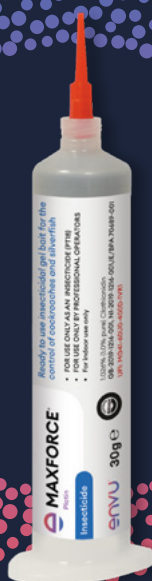


Trust the Power

Maxforce® Platin trusted
to get the job done right the first time.

Trusted by
PCOs for over

40
years



*Envu and Maxforce® are registered trademarks
of Environmental Science U.S. LLC or one of its affiliates.
Always read the label and product information before use.*

For more information
please visit our website



Maxforce® Platin was developed to aid pest control operators in fostering healthier environments where people live, work and play. The active ingredient **Clothianidin**, alongside **BlueBead** feeding stimulant, makes it a unique tool in combating cockroaches and grey silverfish.

**Successfully tested against all types of cockroaches,
including bait-averse strains**



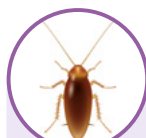
**NYMPH
STAGE**



**ORIENTAL
COCKROACH**



**GERMAN
COCKROACH**



**AMERICAN
COCKROACH**



**GREY SILVER
FISH**

Long lasting effect due to BlueBead technology

- Ensures excellent long lasting bait palatability – especially to nymphs

Great secondary control thanks to “Domino Effect”

- The gel can be transferred from one cockroach to another: non-treated survivors can eat the dead bodies or faeces of individuals that have previously fed on the gel
- This “Domino Effect” enables Maxforce® Platin to control even those cockroaches that remain hidden during treatment

Consistent, Robust, Reliable and Rapid

- Stable in extreme temperatures and does not run or leak – even on vertical surfaces
- Soft and wet when applied, becomes dry within hours and remains palatable up to 12 months
- Visible mortality after 24 hours

Product Information

Active Ingredient: 1.026% (1.0% pure) Clothianidin

Formulation: Ready-to-use Gel Bait (RB)

Packaging: 4x30g

Instructions for use

- Identify the area to be treated by determining where cockroaches pass through (plinths, pipes, electrical ducts, air vents, etc.) and gather.
- Place Maxforce® Platin close to identified areas with the spray gun, but also between food sources and aggregation sites.
- The gel must not be used near uncovered food.
- Before treatment, remove all natural sources of food for cockroaches, the baits will then be more attractive.
- Avoid sites that are too damp, dusty or greasy.
- Avoid depositing bait in uncovered areas or on exposed surfaces.
- The silver fish is applied by placing several small dabs per m² (8 dabs 4 mm in diameter).