



Redefine your normal

Envu Stressgard® creates improved plant health that redefines normal. It is proven technology available in a portfolio of products that mitigates stress and delivers consistent turf quality.

Plant health benefits

- Stressgard® boosts photosynthesis and chlorophyll production
- Enhanced traffic tolerance and recovery
- Excellent turf safety in summer heat

Versatility

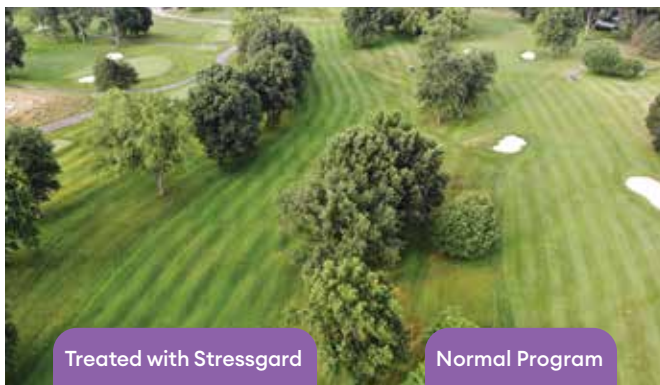
- Manages both biotic and abiotic stresses
- Less restrictive, not AI based
- Multiple solutions available in a portfolio of products

Consistency

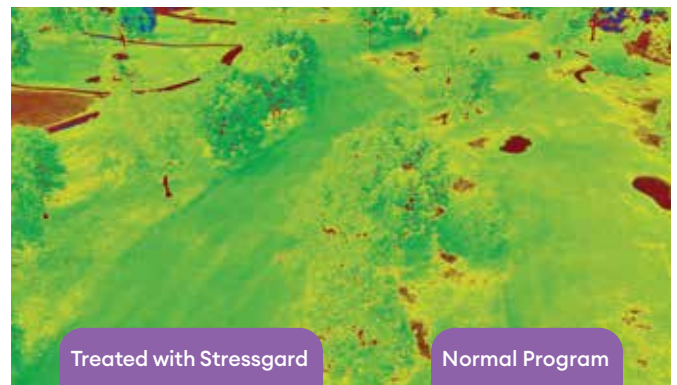
- Performance in all weather conditions
- Immediate aesthetic improvement
- Long lasting results from enhanced plant processes

Satisfaction

- Improves course conditions, the primary driver of golfer satisfaction
- Less worry about turf performance
- More time to do the things you love

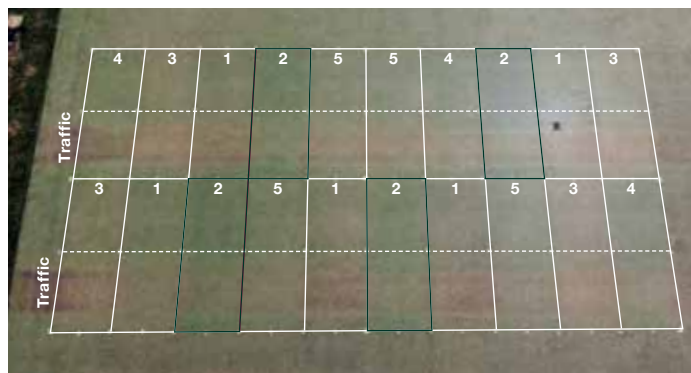


Visibly improved grass health.



Digital imagery analysis for hue as indication of visual turf quality. Green – good, orange – poor.

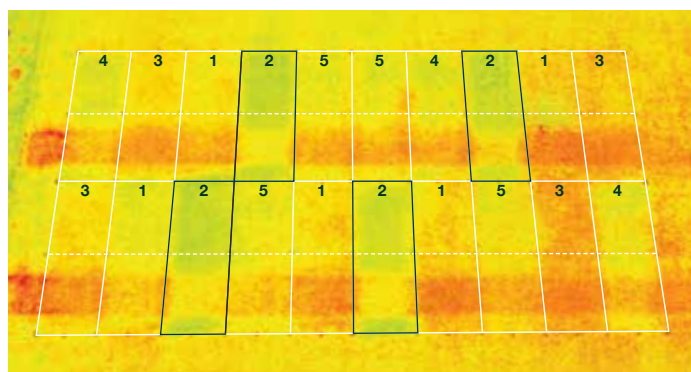
2018 Rutgers University Traffic Stress Trial



Treatment legend

1. Untreated
2. Signature XTRA® 120 g/100 m² – 14 d
3. Fosetyl-AI 120 g/100 m² – 14 d
4. Fosetyl-AI 120 g/100 m² + Pigment – 14 d
5. Potassium phosphite 180 g/100 m² – 14 d

All treatments applied every 14 days starting May 8. Traffic imposed six days per week. Picture taken July 19, three (3) days after sixth application. Images shown are aerial plot photos processed for hue angle as indication of visual quality (green – good, orange – poor).



The Stressgard portfolio



To talk about your specific needs or to learn more about our solutions, please contact an Envu representative.



ca.envu.com 1-800-331-2867

