



Envu plant protection calendar

LOW PRESSURE REGIONS

Putting green program

| Application date | Fungicide (rate) | Mode of action | Targets |
|------------------|---|--------------------------|--|
| Late April | Disarm (11.5 mL) | QoI | Microdochium patch / Leaf spots SPRING CLEANUP |
| Mid-June | Signature XTRA Stressgard (60-120 g) Mirage Stressgard (48 mL) | Phosphonate + DMI | Plant health / Dollar spot / Anthracnose / Patch diseases / Fairy ring ROOT HEALTH – OPTION TO WATER IN |
| Mid-July | Signature XTRA Stressgard (60-120 g) Exteris Stressgard (140-200 mL) | Phosphonate + SDHI + QoI | Plant health / Dollar spot / Anthracnose / Brown patch BROAD SPECTRUM PROTECTION |
| Early August | Signature XTRA Stressgard (60-120 g) Maxtima (12.5 mL) | Phosphonate + DMI | Plant health / Dollar spot / Anthracnose SUMMER DECLINE |
| Late August | Signature XTRA Stressgard (60-120 g) Exteris Stressgard (140-200 mL) | Phosphonate + SDHI + QoI | Plant health / Dollar spot / Anthracnose TURF HEALTH |
| Mid-September | Signature XTRA Stressgard (60-120 g) Mirage Stressgard (32 mL) | Phosphonate + DMI | Dollar spot / Anthracnose / Microdochium SUMMER CLEANUP – FALL PREP |
| October | Signature XTRA Stressgard (120 g) Disarm (11.5 mL) | Phosphonate + QoI | Microdochium patch / Leaf spots GO IN CLEAN |
| November | Dedicate Stressgard (48-64 mL) Fludioxinil | DMI + QoI | Snow moulds WINTER PROTECTION |

Fairway program

| Application date | Fungicide Fungicide (rate) | Mode of action | Targets |
|------------------|-----------------------------|----------------|--|
| June | Mirage Stressgard (32 mL) | DMI | Dollar spot / Anthracnose SUMMER PREP |
| July | Exteris Stressgard (140 mL) | SDHI + QoI | Dollar spot / Anthracnose / Leaf spot PEAK SEASON DOLLAR SPOT |
| August | Mirage Stressgard (32 mL) | DMI | Dollar spot / Anthracnose / Brown spot SUMMER CLEAN UP |
| November | Dedicate Stressgard (48 mL) | DMI + QoI | Typhula / Pink snow moulds WINTER PROTECTION |

Insecticide program

| Application date | Insecticide (rate) | Mode of action | Targets |
|------------------|------------------------|----------------|--|
| Early June | Tetrino (11.6-23.2 mL) | Diamide | 1st generation ABW |
| July | Tetrino (11.6-23.2 mL) | Diamide | White grubs / 2nd generation ABW / Chinch bugs / Cutworms / Sod webworms |

Suggested rates are based on 100 m². Interval of control and suggested programs are based on average historical disease incidence in temperate regions in Canada. Information is believed to be accurate but is not guaranteed. Envu assumes no responsibility or liability for any action taken as a result of any information or advice contained in this plan, and any action taken is solely at the liability and responsibility of the user.

Envu turf products guide

Fungicides

All rates are per 100 m²

| Diseases | Dedicate® Stressgard® | Mirage® Stressgard® | Exteris® Stressgard® | Signature® XTRA Stressgard® | Banol® | Symptoms Visible | | | | | | | | | | | | Periods of Pathogen Activity | | | |
|-------------------------------|-----------------------|---------------------|----------------------------|-----------------------------|--------|------------------|-----|-----|-----|-----|-----|-----|-----|-----|-----|-----|-----|------------------------------|--|--|--|
| | | | | | | Jan | Feb | Mar | Apr | May | Jun | Jul | Aug | Sep | Oct | Nov | Dec | | | | |
| Dollar Spot | 32–64 mL | 32–64 mL | 140–200 mL | | | | | | | | | | | | | | | | | | |
| Foliar Anthracnose | 32–64 mL | 32–64 mL | 200 mL, 140 mL suppression | 60–180 g | | | | | | | | | | | | | | | | | |
| Basal Rot Anthracnose | 32–64 mL | 32–64 mL | 200 mL | 60–180 g | | | | | | | | | | | | | | | | | |
| Microdochium Patch (Fusarium) | 32–64 mL | | | | | | | | | | | | | | | | | | | | |
| Leaf Spot | 32–64 mL | | 140–200 mL | | | | | | | | | | | | | | | | | | |
| Pythium Blight | | | | 60–180 g | 64 mL | | | | | | | | | | | | | | | | |
| Pythium Root Rot | | | | 60–180 g | | | | | | | | | | | | | | | | | |
| Pythium Damping Off | | | | | 64 mL | | | | | | | | | | | | | | | | |
| Fairy Ring | | 32–64 mL | | | | | | | | | | | | | | | | | | | |
| Summer Patch | 32–64 mL | 32–64 mL | | | | | | | | | | | | | | | | | | | |
| Brown Patch | 32–64 mL | 32–64 mL | 140–200 mL | | | | | | | | | | | | | | | | | | |
| Pink Snow Mould | 32–64 mL | 30–60 mL | | | | | | | | | | | | | | | | | | | |
| Grey Snow Mould | 32–64 mL | 30–60 mL | | | | | | | | | | | | | | | | | | | |

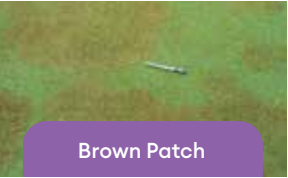
Insecticides

All rates are per 100 m²

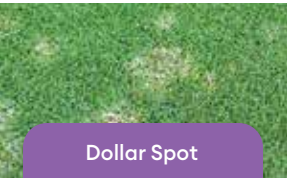
| Pests | Tetrino® | Suspend PolyZone® | Periods of Egg Laying | | | | | | | | | | | | Periods of Feeding | | | |
|--------------------------|--------------|-------------------|-----------------------|-----|-----|-----|-----|-----|-----|-----|-----|-----|-----|-----|--------------------|--|--|--|
| | | | Jan | Feb | Mar | Apr | May | Jun | Jul | Aug | Sep | Oct | Nov | Dec | | | | |
| Annual Bluegrass Weevil | 11.6–23.2 mL | | | | | | | | | | | | | | | | | |
| European Chafer Grub | 23.2 mL | | | | | | | | | | | | | | | | | |
| Japanese Beetle Grub | 23.2 mL | | | | | | | | | | | | | | | | | |
| Black Turfgrass Ataenius | | | | | | | | | | | | | | | | | | |
| Leatherjackets | | | | | | | | | | | | | | | | | | |
| Cutworm | 11.6–23.2 mL | 12 mL | | | | | | | | | | | | | | | | |
| Chinch Bug | 11.6–23.2 mL | 12 mL | | | | | | | | | | | | | | | | |
| Ants | | 12 mL | | | | | | | | | | | | | | | | |
| Mosquito | | 0.03% (6 mL/L) | | | | | | | | | | | | | | | | |
| Sod Webworm | 11.6–23.2 mL | 12 mL | | | | | | | | | | | | | | | | |
| Ticks | | 12 mL | | | | | | | | | | | | | | | | |



Anthracnose



Brown Patch



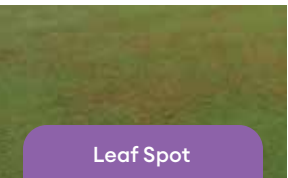
Dollar Spot



Microdochium Patch



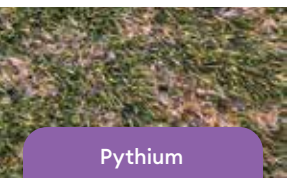
Grey Snow Mould



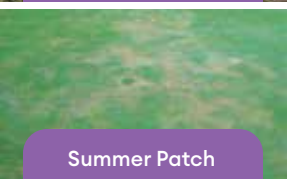
Leaf Spot



Pink Snow Mould



Pythium



Summer Patch

To talk about your specific needs or to learn more about our solutions, please contact an Envu representative.



ca.envu.com 1-800-331-2867

ALWAYS READ AND FOLLOW PESTICIDE LABEL DIRECTIONS.
Envu, the Envu logo, Banol®, Exteris® Stressgard®, Signature® XTRA Stressgard®, Mirage® Stressgard®, Dedicate® Stressgard®, Suspend PolyZone® and Tetrino® are trademarks owned by Environmental Science U.S. LLC. or one of its affiliates.
©2024 Environmental Science U.S. LLC. All rights reserved. 1330-0224