

## Detection protocol of bed bugs with TruDetx<sup>®</sup>.

TruDetx<sup>®</sup> is an early detection tool that can be used in the early stages of an infestation. It detects bedbug residues for up to 90 days.



### 1. Preliminary stage: carrying out a general inspection

Carry out a diagnostic phase before using TruDetx<sup>®</sup> :

- **Ask about living habits** in the home and pay particular attention to surfaces where people sleep during the day or night for **more than 30 minutes** (identify beds or sofas).
- **Identify signs of presence:** traces of faeces, appearance of bites (NB: other insects can also cause scratching and biting, such as fleas, lice, mites, mosquitoes, etc.).
- **Locate potential hiding places for bedbugs** (dark places, away from ventilation and vibration, cracks of less than 1 mm in materials, rough surfaces such as wood, textiles, paper, etc.).
- Inspect adjacent **premises or flats**



Detergents degrade bedbug residues and interfere with detection.  
Do not clean before detection with TruDetx<sup>®</sup>.

## 2. Targeted sampling of potential residues

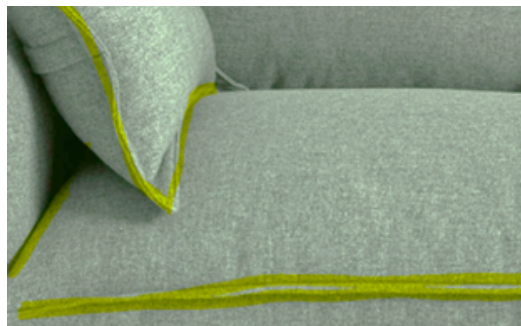
To maximise detection reliability, limit sampling to bedbug living areas, i.e. areas identified during the diagnostic phase where bedbugs are likely to feed (i.e. where occupants sleep for more than 30 minutes). For example, in yellow below:

Along the seams of the mattress on top and underneath, unwashed sheets (mattress edges)



Bedsprings: potential refuge areas

Headboard: angled areas or slots



If sofas are suspected: seams/edges, potential refuge areas on the seat

NB: In the event of suspicion in premises other than dwellings, consult our experts to establish an appropriate detection protocol.



After inserting the cotton swab into the tube, be sure to bring the liquid into contact with the swab (shake gently for 15 seconds) to collect as much of the potential residue as possible.

## 3. Test and quick reading of the result

- Place the meter on a flat surface
- Apply 4 drops of the solution containing the sample
- Read the test precisely between 0 and 5 minutes.



The width of the line may vary but does not give any information about the level of infestation. If the reading is longer than 5 minutes, other insect pests of the *Dermestidae* family, such as carpet beetles or beetles, may be detected.



Store the tests at a temperature of between 2°C and 30°C to avoid altering the results (use an insulated bag or cool box).



Scan the QR code for more information.

If you have any questions, please contact us using the contact form on our website: [envu.be/contact](https://envu.be/contact)



Legal information: K-Othrine Partix, TP18 Insecticide, Biocidal product, MA n° BE2018-0010, Classification: skin sensitisation (cat. 1), acute and chronic toxicity for the aquatic environment (cat. 1), Composition: 25g/L deltamethrin, amorphous silica (nano). Envu, the Envu logo and the TruDetx logo are registered trademarks of Environmental Science U.S LLC or one of its subsidiaries.